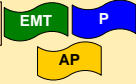
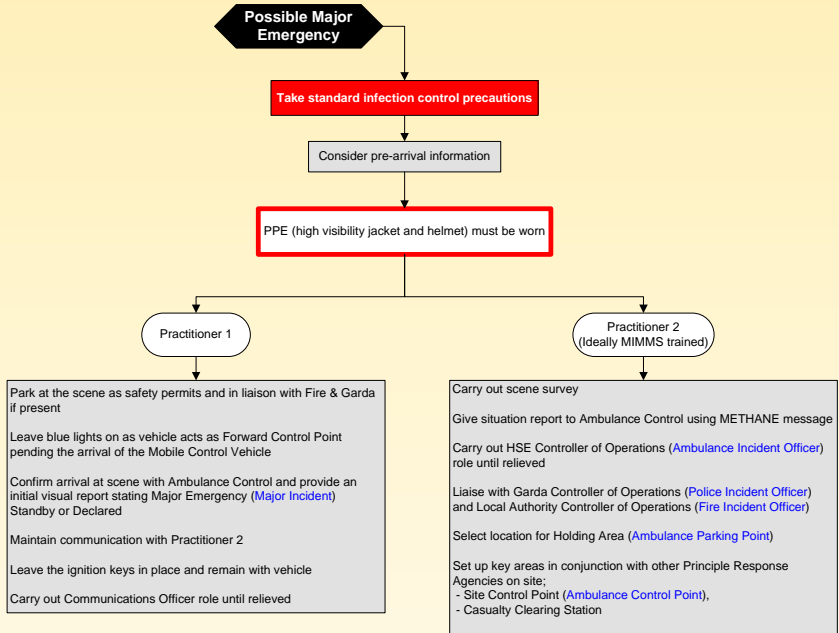


4/5/6.8.1
05/08

Major Emergency (Major Incident) – First Practitioners on site



Irish (Major Emergency) terminology in black
UK (Major Incident) terminology in blue



If single Practitioner is first on site combine both roles until additional Practitioners arrive

METHANE message
 M – Major Emergency declaration / standby
 E – Exact location of the emergency
 T – Type of incident (transport, chemical etc.)
 H – Hazards present and potential
 A – Access / egress routes
 N – Number of casualties (injured or dead)
 E – Emergency services present and required

The first ambulance crew does not provide care or transport of patients as this interferes with their ability to liaise with other services, to assess the scene and to provide continuous information as the incident develops

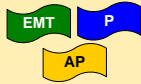
PRE-HOSPITAL EMERGENCY CARE OPERATIONS
Major Emergency – First Practitioners on site

The principles and terminology of Major Incident Medical management and Support (MIMMS) has been used with the kind permission of the Advanced Life Support Group, UK

SECTION 8 - PRE-HOSPITAL EMERGENCY CARE OPERATIONS

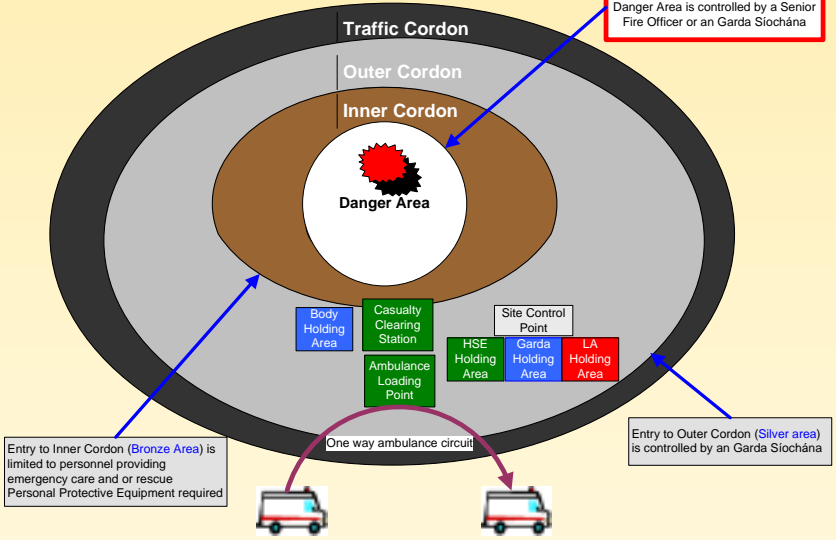
4/5/6.8.2
05/08

Major Emergency (Major Incident) – Operational Control



Irish (Major Emergency) terminology in black
UK (Major Incident) terminology in blue

If Danger Area identified entry to Danger Area is controlled by a Senior Fire Officer or an Garda Síochána



Entry to Inner Cordon (Bronze Area) is limited to personnel providing emergency care and/or rescue. Personal Protective Equipment required.

Entry to Outer Cordon (Silver area) is controlled by an Garda Síochána

Management structure for:
Outer Cordon, Tactical Area (Silver Area)
 On-Site Co-ordinator
 HSE Controller of Operations (Ambulance Incident Officer)
 Site Medical Officer (Medical Incident Officer)
 Local Authority Controller of Operations (Fire Incident Officer)
 Garda Controller of Operations (Police Incident Officer)

Management structure for:
Inner Cordon, Operational Area (Bronze Area)
 Forward Ambulance Incident Officer (Forward Ambulance Incident Officer)
 Forward Medical Incident Officer (Forward Medical Incident Officer)
 Fire Service Incident Commander (Forward Fire Incident Officer)
 Garda Cordon Control Officer (Forward Police Incident Officer)

Other management functions for:
Major Emergency site
 Casualty Clearing Officer
 Triage Officer
 Ambulance Parking Point Officer
 Ambulance Loading Point Officer
 Communications Officer
 Safety Officer



PRE-HOSPITAL EMERGENCY CARE OPERATIONS
Major Emergency – Operational Control

S8

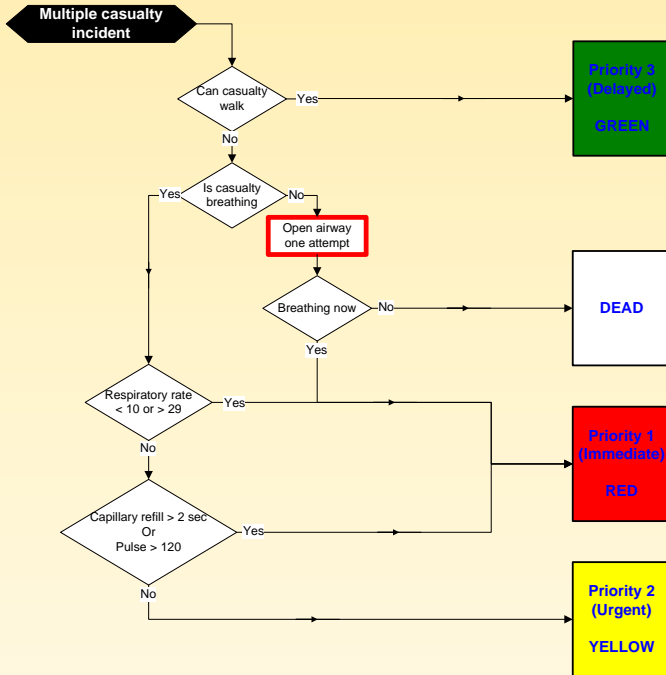
Ref: A Framework for Major Emergency Management, 2006, Inter-Departmental Committee on Major Emergencies (Replaced by National steering Group on Major Emergency Management)

The principles and terminology of Major Incident Medical management and Support (MIMMS) has been used with the kind permission of the Advanced Life Support Group, UK

4/5/6.8.3
05/08

Triage Sieve

EMT P
AP



Triage is a dynamic process

The principles and terminology of Major Incident Medical management and Support (MIMMS) has been used with the kind permission of the Advanced Life Support Group, UK

5/6.8.4
05/08

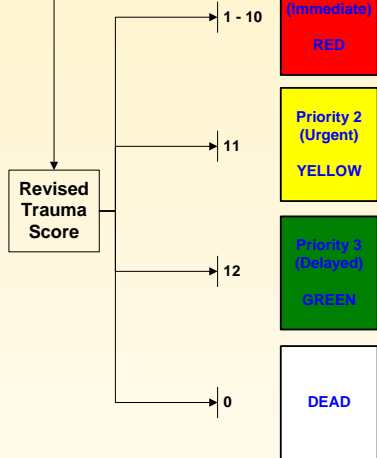
Triage Sort



Multiple casualty incident

Triage is a dynamic process

Cardiopulmonary function	Measured value	Score	Insert score
Respiratory Rate	10 – 29 / min	4	A
	> 29 / min	3	
	6 – 9 / min	2	
	1 – 5 / min	1	
	None	0	
Systolic Blood Pressure	≥ 90 mm Hg	4	B
	76 – 89 mm Hg	3	
	50 – 75 mm Hg	2	
	1 – 49 mm Hg	1	
	No BP	0	
Glasgow Coma Scale	13 – 15	4	C
	9 – 12	3	
	6 – 8	2	
	4 – 5	1	
	3	0	
Triage Revised Trauma Score			A+B+C



Eye Opening	Spontaneous	4
	To Voice	3
	To Pain	2
	None	1
Verbal Response	Oriented	5
	Confused	4
	Inappropriate words	3
	Incomprehensible sounds	2
Motor Response	Obeys commands	6
	Localises pain	5
	Withdraw (pain)	4
	Flexion (pain)	3
	Extension (pain)	2
None	1	
Glasgow Coma Scale		

PRE-HOSPITAL EMERGENCY CARE OPERATIONS
Triage Sort

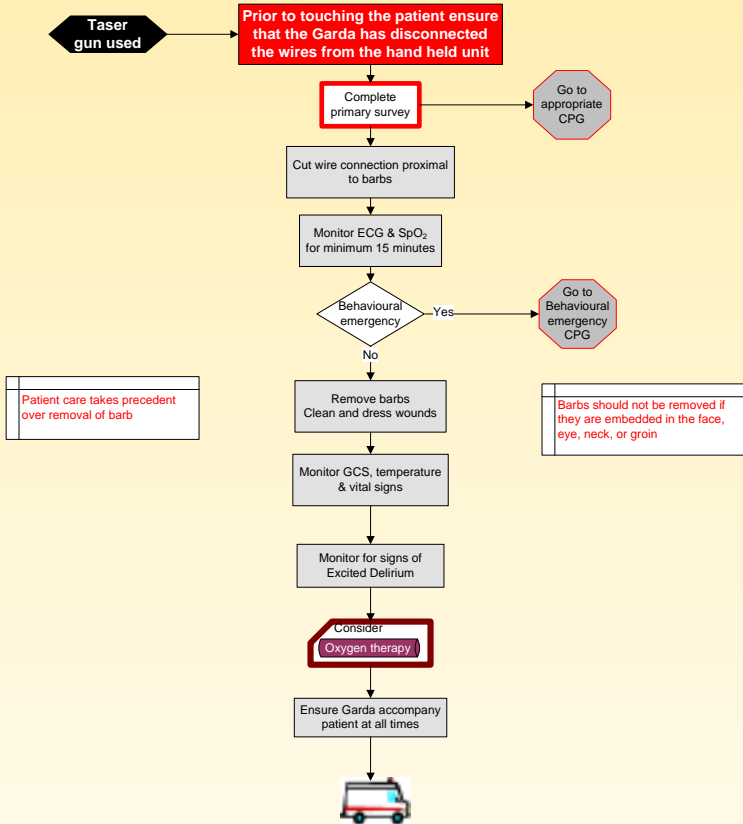
S8

The principles and terminology of Major Incident Medical management and Support (MIMMS) has been used with the kind permission of the Advanced Life Support Group, UK

5/6.8.5
05/08

Conducted Electrical Weapon (Taser)

P AP



Note:
This CPG was developed in conjunction with the Chief Medical Officer, An Garda Síochána

Reference:
DSAC Sub-committee on the Medical Implications of Less-lethal Weapons 2004, Second statement on the medical implications of the use of the M26 Advanced Taser.
United States Government Accountability Office, 2005, The use of Taser by selected law enforcement agencies
Manitoba health Emergency Medical Services, 2007 Taser Dart Removal Protocol