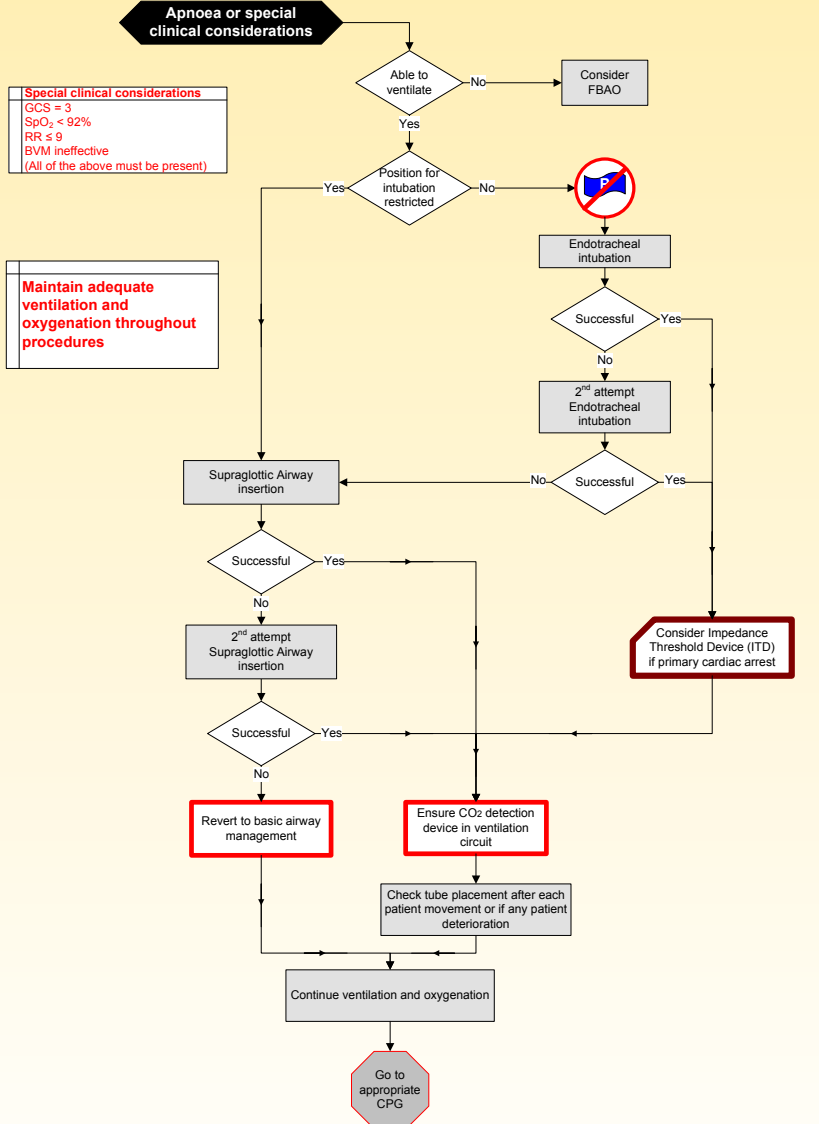


05/08

5/6.3.1

Advanced Airway Management – Adult (≥ 8 years)

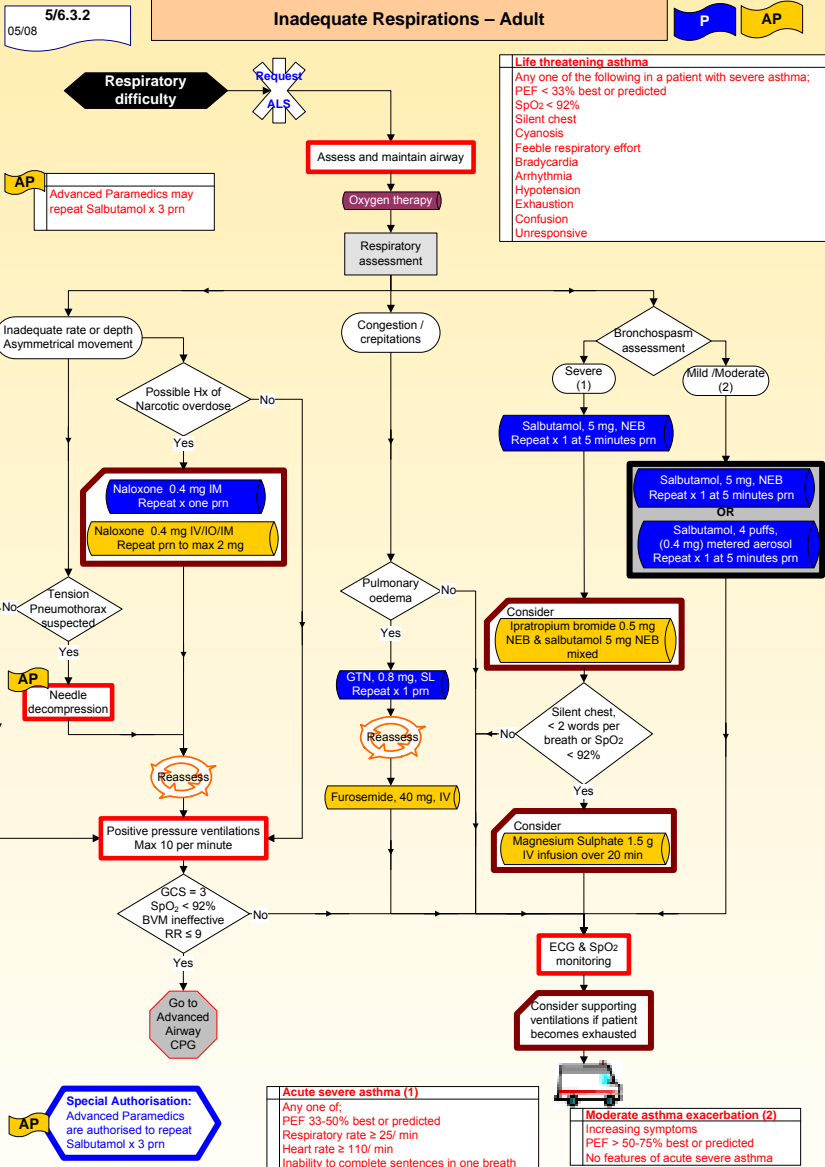
P **AP**



RESPIRATORY EMERGENCIES
Advanced Airway Management – Adult (≥ 8 yrs)

S3

Reference: International Liaison Committee on Resuscitation, 2005, Part 4: Advanced life support, Resuscitation (2005) 67, 213 – 247



Reference: British Thoracic Society, 2005, British Guidelines on the Management of Asthma, a national clinical guideline

05/09 5/6.3.3

Exacerbation of COPD

P AP

Dyspnoea

Oxygen Therapy
1. if O₂ alert card issued follow directions.
2. if no O₂ alert card, commence therapy at 28%.
3. administer O₂, titrated to SpO₂ 92%

History of COPD

Oxygen therapy

ECG & SpO₂ monitor

Salbutamol 5 mg NEB

Measure Peak Expiratory Flow

PEF < 50% predicted

Request ALS

Ipratropium bromide 0.5 mg NEB & salbutamol 5 mg NEB mixed

Deteriorates / no improvement

Hydrocortisone 200 mg IM or slow IV

Adequate respirations

Go to Inadequate respirations CPG



RESPIRATORY EMERGENCIES
Exacerbation of COPD

S3

An exacerbation of COPD is defined as;
An event in the natural course of the disease characterised by a change in the patient's baseline dyspnoea, cough and/or sputum beyond day-to-day variability sufficient to warrant a change in management. (European Respiratory Society)