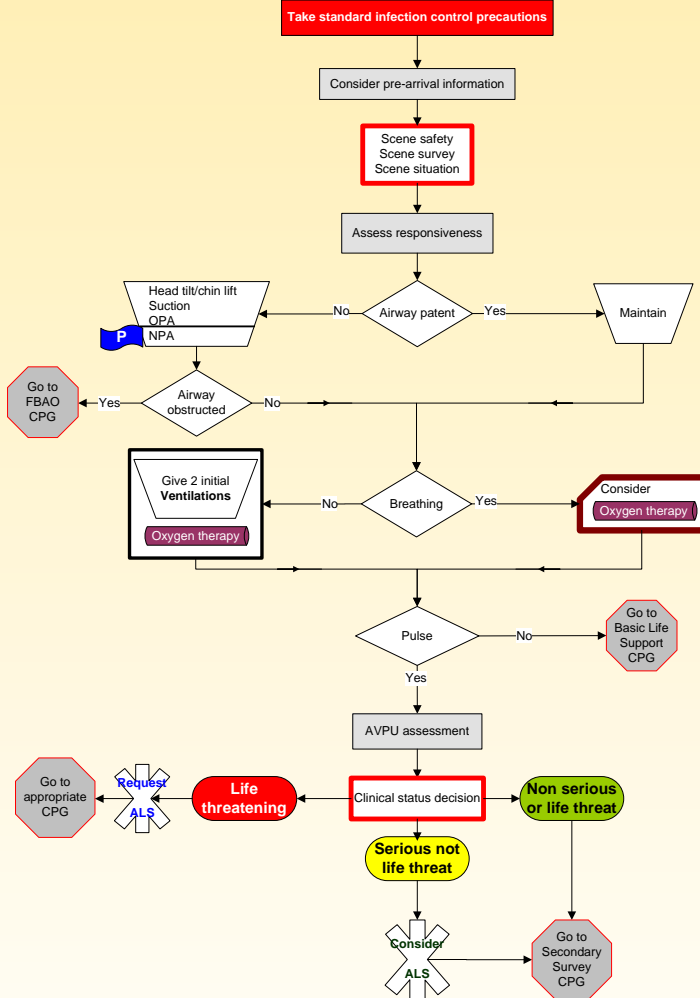
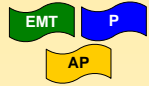


4/5/6.2.1  
05/08

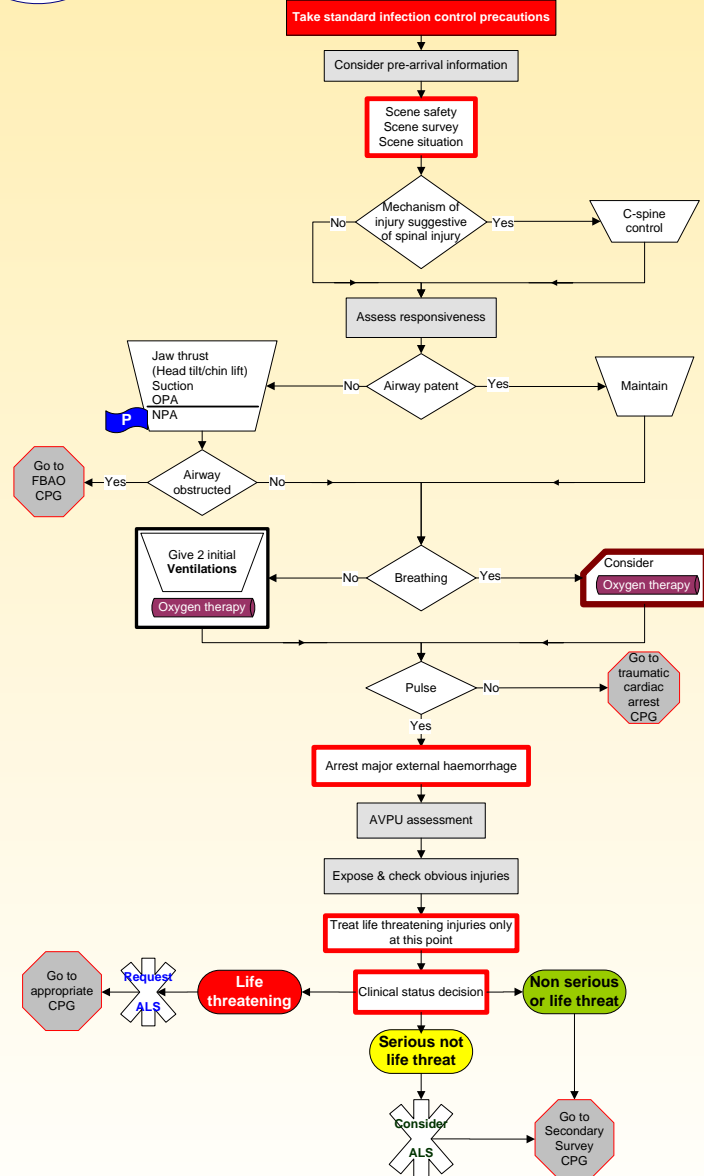
Primary Survey Medical – Adult



4/5/6.2.2  
05/08

**Primary Survey Trauma – Adult**

EMT P  
AP



PATIENT ASSESSMENT  
Primary Survey Trauma – Adult

S2

5/6.2.4  
05/08

Secondary Survey Medical – Adult

P AP

**Markers identifying acutely unwell**  
Cardiac chest pain  
MEWS Score of  $\geq 5$   
Acute pain  $> 5$

Primary Survey

Record vital signs & GCS

Patient acutely unwell

Yes

No

Focused medical history of presenting complaint

SAMPLE history

Relevant family & social history

Check for medications carried or medical alert jewellery

Examine body systems as appropriate

Request ALS

Identify positive findings and initiate care management

Go to appropriate CPG



S2

Modified Early Warning Score (MEWS)							
Score	3	2	1	0	1	2	3
Resp Rate		< 9		9 - 14	15 - 20	21 - 29	> 29
Heart Rate		< 41	41 - 50	51 - 100	101 - 110	111 - 129	> 129
Sys BP	< 71	71 - 80	81 - 89	90 - 159	160 - 169	170 - 199	> 199
Temp		< 35		35 - 38.4		> 38.4	
AVPU				Alert	Voice	Pain	Unresponsive

A score of 5 or more is a marker for immediate transport

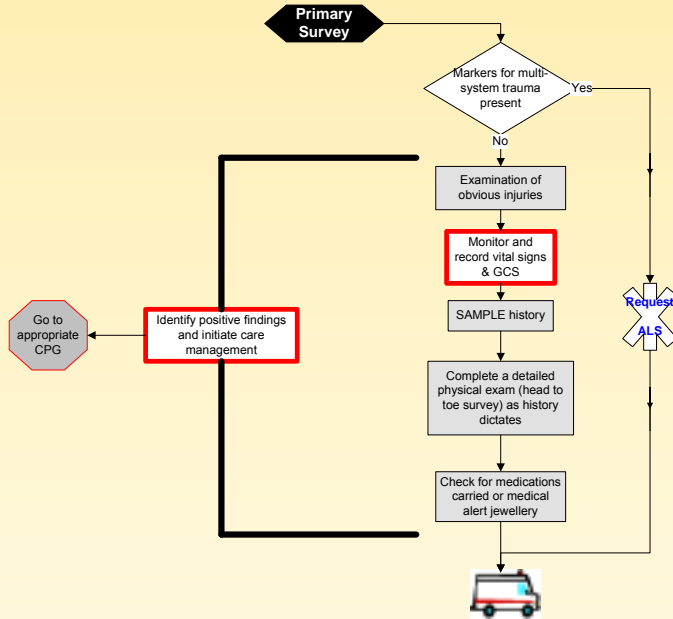
Reference: Sanders, M. 2001, Paramedic Textbook 2<sup>nd</sup> Edition, Mosby  
Gleadle, J. 2003, History and Examination at a glance, Blackwell Science  
Rees, JE, 2003, Early Warning Scores, World Anaesthesia Issue 17, Article 10

5/6.2.5  
05/08

Secondary Survey Trauma – Adult

P

AP



PATIENT ASSESSMENT  
Secondary Survey Trauma – Adult

S2

<b>Markers for multi-system trauma</b>	
GCS < 13	
Systolic BP < 90	
Respiratory rate < 10 or > 29	
Heart rate > 120	
Revised Trauma Score < 12	
Mechanism of Injury	

<b>Revised Trauma Score</b>	
Respiratory 10 – 29	4
Rate > 29	3
6 – 9	2
1 – 5	1
0	0
<hr/>	
Systolic BP ≥ 90	4
76 – 89	3
50 – 75	2
1 – 49	1
no BP	0
<hr/>	
GCS 13 – 15	4
9 – 12	3
6 – 8	2
4 – 5	1
3	0
<hr/>	
RTS = Total score	

Reference: McSwain, N. et al, 2003, PHTLS Basic and advanced prehospital trauma life support, 5<sup>th</sup> Edition, Mosby

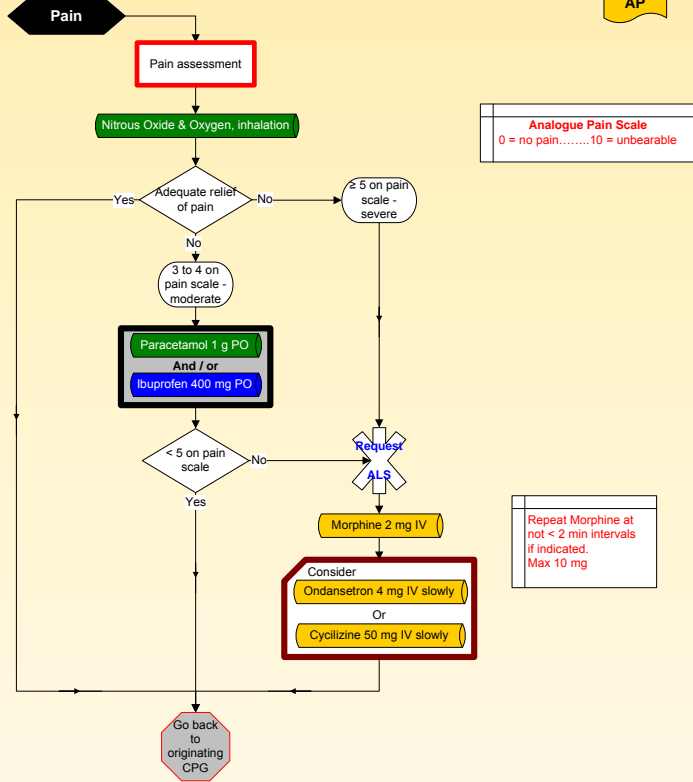
4/5/6.2.6  
05/08

**Pain Management – Adult**

EMT P  
AP

PATIENT ASSESSMENT  
Pain Management – Adult

S2



**Decisions to give analgesia must be based on clinical assessment and not directly on a linear scale**

AP Special Authorisation:  
Advanced Paramedics are authorised to administer Morphine 10 mg IM if IV not accessible, the patient is cardio-vascularly stable and no cardiac chest pain present

EMT P Special Authorisation:  
Registered Medical Practitioners may authorise the use of IM Morphine by Paramedic or EMT practitioners for a specific patient in an inaccessible location

Reference: World Health Organization, Pain Ladder